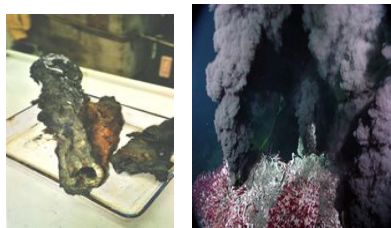
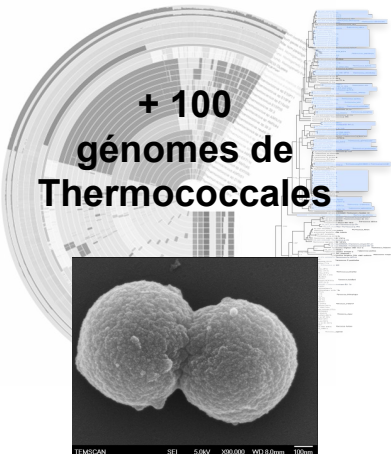


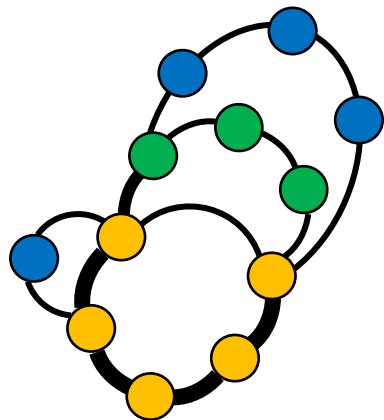
# Données



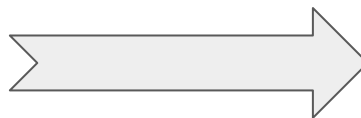
Cheminée hydrothermale

# Projet

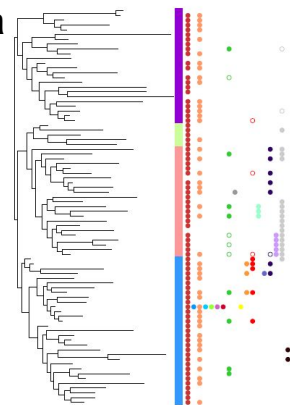
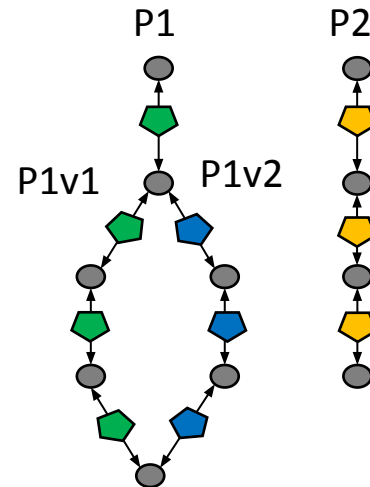
1/ Analyse de pangénomes au niveau des espèces et genres



2/ Prédiction des voies métaboliques

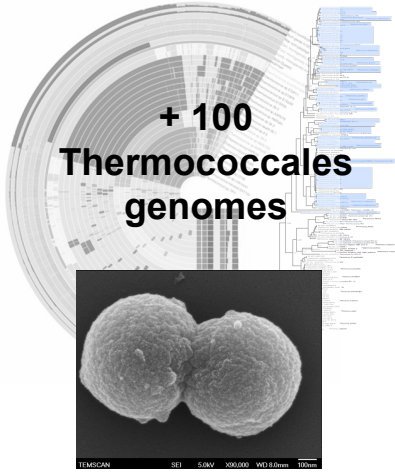


3/ Etude de la distribution de ces voies métaboliques à l'échelle des pangénomes et de l'évolution



UMR GENOSCOPE METABOLIC GENOMICS

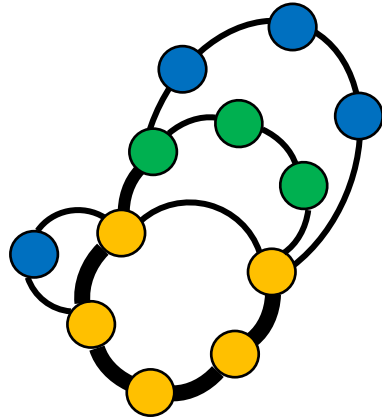
# Data



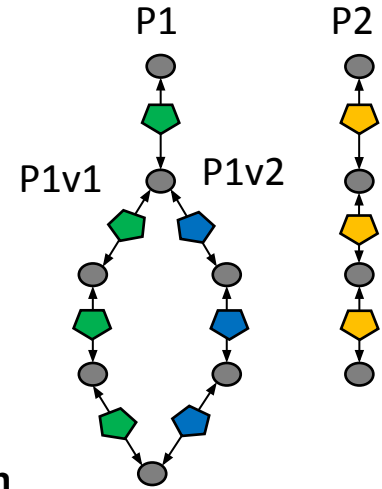
Hydrothermal vent  
& geothermal springs

# Project

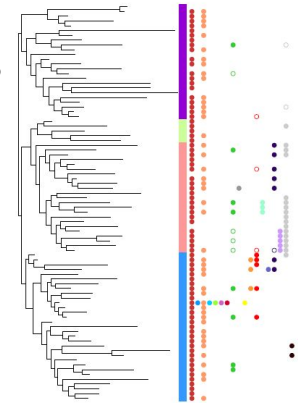
1/ Pangenomic analysis at the  
genus and species level



2/ Metabolic pathway  
prediction



3/ Distribution  
analysis of the  
metabolic pathways  
at the pangenome  
level and during  
evolution



UMR GENOSCOPE  
METABOLIC GENOMICS